

D.D. Bean & Sons Co.

Overwrap Sleeve Specifications

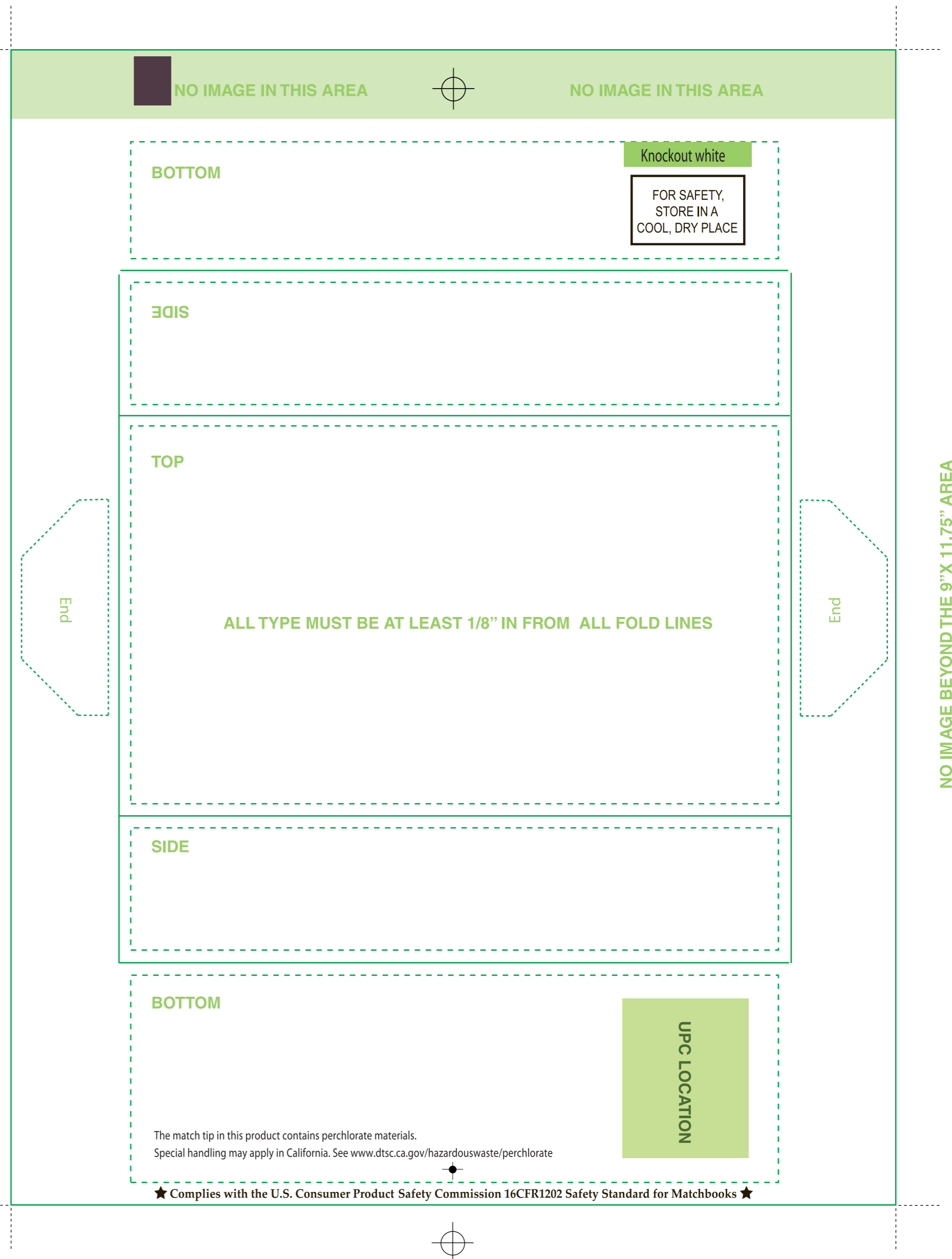
- Finished size of sleeve is 11.75" x 9"
- Print register targets indicated (at center top and bottom) must appear as shown and on each color comprising the design
- Timing mark (rectangular block at upper left) is required to be in the location, size and orientation shown and must print at 100% using the darkest color (preferably black) available among those being presented within the layout
- All graphics and copy must stay within the image areas denoted by the broken lines
- Bitmapped images are of sufficient resolution > 300 dpi
- Color bleeds cannot extend into noted non-image areas
- Minimum type size is 5 point Helvetica or equivalent
- Minimum line/rule size is 1 point
- Proper panel orientation is indicated by the right-reading of the tag copy shown on each panel
- UPC location, size and orientation must appear as shown
- Adobe Illustrator (v. 8 or later) is our preferred format in which to receive electronic files. **Files should not be locked.**
- Code Box (upper right) must be in location shown and free of print
- Perchlorate statement must appear
- U.S. Consumer Product Safety Commission statement must appear
- For Safety Store in a Cool, Dry Place. Must Appear
- Distribution statement must be legible and include name and address of distributor

A holding line should be used when type is reversed and comprised of more than one color. The holding line should be a single, dark color to hide and slight misregistration that is likely to occur during the printing process. The weight of the holding line should be twice the registration tolerance. Registration tolerance is .012"

If a holding line is not used, the darkest or predominant color should be made at full size and the remaining color/colors must be choked back. If possible the type should be knocked out of one color only.

You may submit art without traps, holding lines or chokes and our film house will add them if necessary.

NO IMAGE BEYOND THE 9"X 11.75" AREA



NO IMAGE BEYOND THE 9"X 11.75" AREA